



CCS NEWS

Spring/Summer 2004

CALIFORNIA CHILDREN'S SERVICES OF SANTA CRUZ COUNTY

CCS is getting a facelift! We will be updating our computer systems effective July 1, 2004. The upcoming changes will take place in the **REFERRAL, AUTHORIZATION** and **CLAIMING** processes.

REFERRALS and AUTHORIZATIONS

As a result of this update, CCS has replaced the referral/request form with a new form known as a "SAR" (Service Authorization Request). There are four different types of SAR's:

- ◆ *New Referral Client Service Authorization Request (DHS4488)*
- ◆ *Established Client Service Authorization Request (DHS4509)*
- ◆ *Discharge Planning Service Authorization Request (DHS4489)*
- ◆ *Request for Dental Services (pending)*

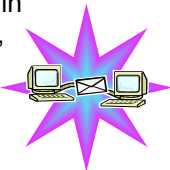
These forms are online at the DHS website; <http://dhs.ca.gov/pcfh/cms/ccs/publications.htm>

These new SARs will require the specific CPT and HCPCS codes that you will use to bill for treatment of the patient's CCS condition. The resulting CCS authorization will be an integral part of the billing process.

Enclosed are copies of the new SAR's, please start using these new forms with your next referral or service request.

CLAIMS

Effective July 1, 2004 claims can be electronically billed directly to Medi-Cal/EDS in Sacramento. With electronic billing, you can have a 24-hour notification process and a much quicker payment. If you don't have access to electronic billing, you may still use paper claims. These claims will bypass the local CCS office.

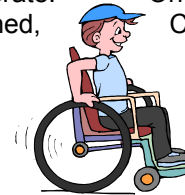


But don't worry. There will be a "real" person at the local CCS office to help you with those difficult claims.



DURABLE MEDICAL EQUIPMENT

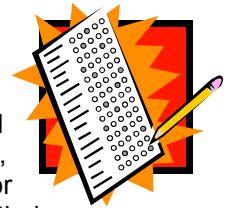
When ordering DME, it is critical for vendors to work closely with MTU staff to develop medical justification for the requested items. In addition to supplying prescriptions for DME, we're requiring that our providers **document the medical need** for DME in reports they generate. Once the medical need is determined, CCS will authorize the item.



Additionally, justification is DME that is not **special** required for any **the least costly alternative**. Thus, we will need documentation to support the purchase of any device that is not the most basic version. Clearly, there are times when a client's medical need is not met by the most basic version of a DME. Please be sure to clearly document how the requested item differs from the least costly alternative in your documentation.

GET ON THE LIST!

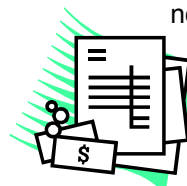
In December 2003, DHS sent out an Information Notice titled "Provider Reimbursement Alert", requesting that all current or pending providers of CCS submit their information via Enclosure A (Physicians) or B (Non-Physicians, eg. OT, PT, Audiologist, etc). If you are in a group practice, **EACH** provider within your group needs to complete a separate form. Call the local CCS office for a copy of the Enclosures.



This critical step will **"get you on the list"**. WITHOUT the enclosure on file at Medi-Cal/EDS, the local CCS program will NOT be able to authorize you as a provider of CCS services.

REIMBURSEMENT

For billing reimbursement, every CCS provider must obtain an active Medi-Cal provider number. If you are not sure if your Medi-Cal number is active, you may call the local CCS office for verification. If you don't currently have a Medi-Cal Provider number, please call Medi-Cal Provider Enrollment to request an application. You can also obtain an application via the Medi-Cal website, www.medi-cal.ca.gov. Provider Enrollment branch.



GENERAL DENTISTRY and ORTHODONTICS

All dental and orthodontic providers are required to have an **ACTIVE** Denti-Cal provider number. Denti-Cal providers can choose to limit their practice. To apply for a new Denti-Cal number or update the information on your current number, please call Denti-Cal Provider Enrollment.



California Children's Services

Chris Dybdahl, Administrator

Main Office (831) 763-8900

Fax (831) 763-8910

Provider Relations (831) 763-8929

Address: 12 W. Beach St. Rm 271

Watsonville, CA 95076

Mailing Address:

P.O. Box 962

Santa Cruz, CA 95061

EDS/Medi-Cal (800) 541-5555

Provider Enrollment Option 15

CCS Program Opt 18 then Opt 11

Denti-Cal for Providers (800) 423-0507

California Children's Services (CCS)

P.O. Box 962

Santa Cruz, CA 95061

TRAINING SEMINARS

All Medical: June 22, 2004 and July 8, 2004

the Department of Health Services (DHS) and EDS will be conducting CCS Enhancement training sessions to orient providers. These sessions will be via satellite at the County of Santa Cruz Health Services campus at 1080 Emeline Ave. Bldg D. - Santa Cruz. Registration is required. Call Medi-Cal/EDS for registration.

Also check the Medi-Cal website at http://pro.medi-cal.ca.gov/ccs_training.asp for other sessions.

Dental: May 21, 2004, Delta Dental &

Denti-Cal will conduct a seminar at the Double Tree Hotel in San Jose which will focus on the new CCS billing guidelines. Call Denti-Cal for more info and registration.

